

PROFEEDER USER MANUAL



EasyRobotics®
- we move your parts

Table of contents

1	Introduction/intended use	3
2	Safety notice.....	3
3	Installation	4
3.1	Relocating bracket for teach pendant.....	4
3.2	Mounting the controller inside the ProFeeder	4
3.3	Air connection	4
3.4	Mounting the robot	5
4	Adjustments	6
4.1	Adjusting the feets.....	6
5	Transport	6
6	Dimensions.....	7
6.1	ProFeeder	7
6.2	ProFeeder Table.....	8
6.3	ProFeeder Light	9
7	Pneumatic diagram	10
8	Version of the ProFeeder	11
9	Declaration of incorporation of partly completed machinery (CE)	12

Information contained herein is the property of EasyRobotics ApS and shall not be reproduced in whole or in part without prior written approval of EasyRobotics ApS. The information herein is subject to change without notice and should not be construed as a commitment by EasyRobotics ApS. This manual is periodically reviewed and revised.

EasyRobotics ApS assumes no responsibility for any errors or omissions in this document.

Patented product.

1 Introduction/intended use

ProFeeder is designed for easy feeding of CNC machines and other workplaces and machines.



2 Safety notice

The CE marking of the EasyPalletizer is **not** valid as a marking of the **complete** robot cell. An overall risk assessment of the full installation must be performed. The Risk assessment must include the EasyPalletizer, LiftKit, the robot, the gripper and all other equipment, machinery, and installations at the workspace. Local governmental safety rules and legislation must be followed.

ProFeeder must be bolted to the floor when performing working operation. The local governmental safety roles must be followed when installing and running with a robot on the ProFeeder. When you place the Mover (trolley) in The ProFeeder beware that nobody has their hands or fingers in between.

When placing the Mover (Trolley) in the ProFeeder please beware that nobody has their fingers or body in between the ProFeeder and the Mover. See photos below.



3 Installation

3.1 Relocating bracket for teach pendant

Unscrew the bracket from the side of the controller and attach it to the mount. Which can be mounted on the left or right side of the ProFeeder, see the lower photo with the 2 bolts. Reuse the original screws.

3.2 Mounting the controller inside the ProFeeder

Place the control box inside the ProFeeder



Check that none of the cables are squeezed

3.3 Air connection

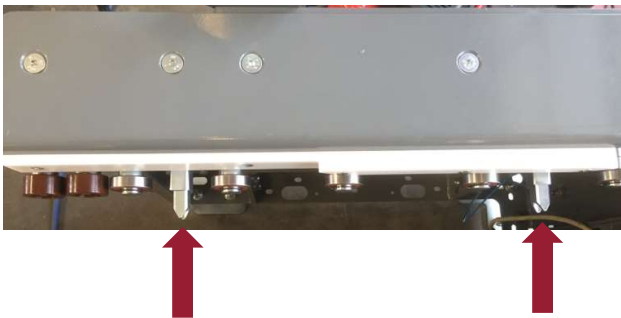
Connect air to the Profeeder, use 6 bar dry air supply



The main air connector is placed at the back of the ProFeeder at floor level. Supplied by EasyRobotics.



The female air hose connector is supplied by the customer.



The 2 air cylinders are here shown in locking position without the mover in place.



To center the Mover with the work plate turn the rotary airswitch.

3.4 Mounting the robot



Follow the mounting guidelines of the cobot/robot manual.

Attach the robot on top of the horizontal robot console. Mind the cable if connected.

If using the fixed tower, locate the cable inside the pillar.



4 Adjustments

4.1 Adjusting the feet

Loosen the lock nut, adjust the foot by turning, retighten the lock nut.

The feet should be adjusted so:

- The wheels are a few millimeters off the ground when the Mover is parked. To be sure that there is no steel/wood or other shaving underneath the wheels. (Easy centering of the mover)
- The ProFeeder stands stable without rocking, use a bubble level.



5 Transport

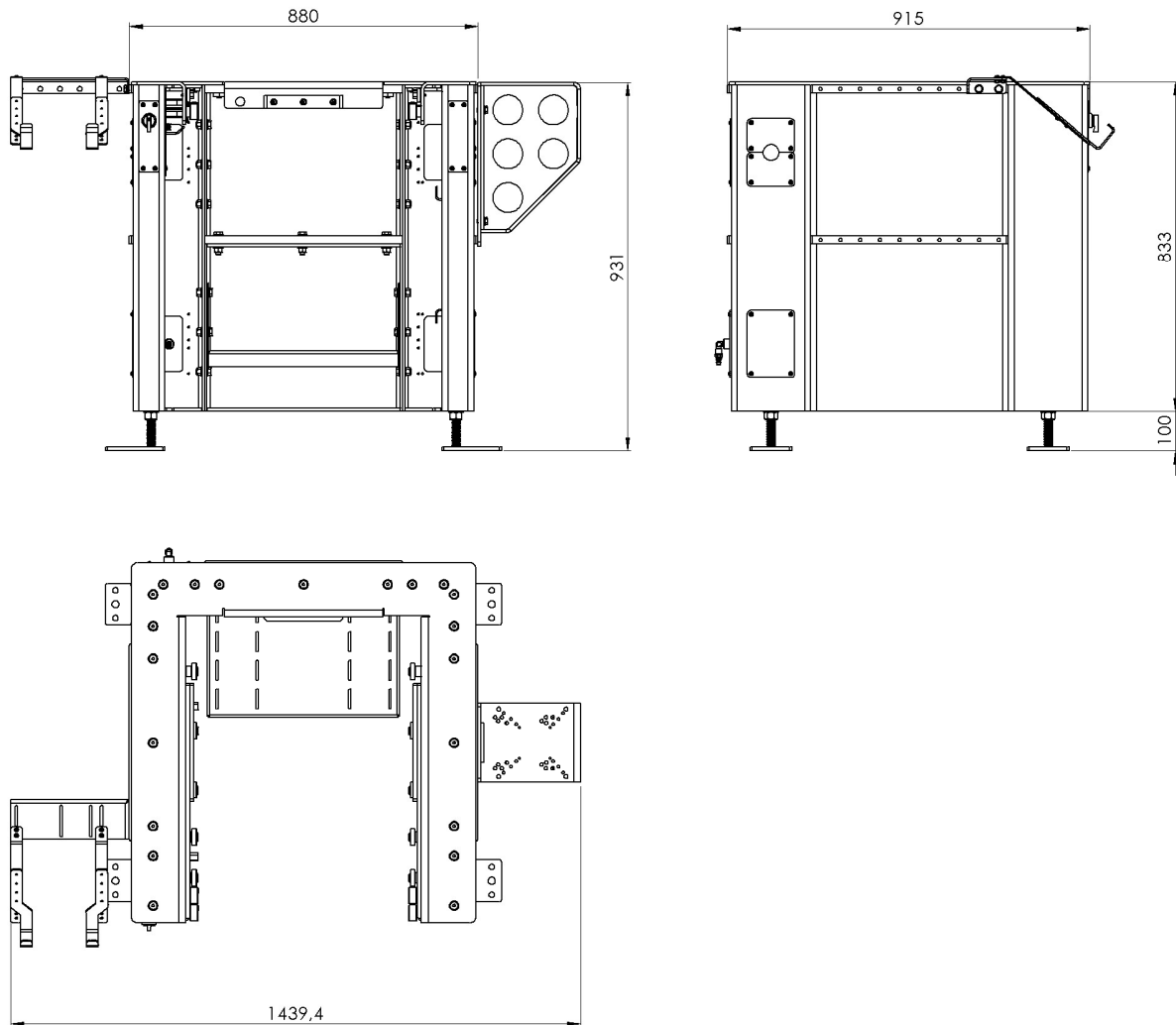
The ProFeeder is delivered in a wooden box. Use this box for any further transport.



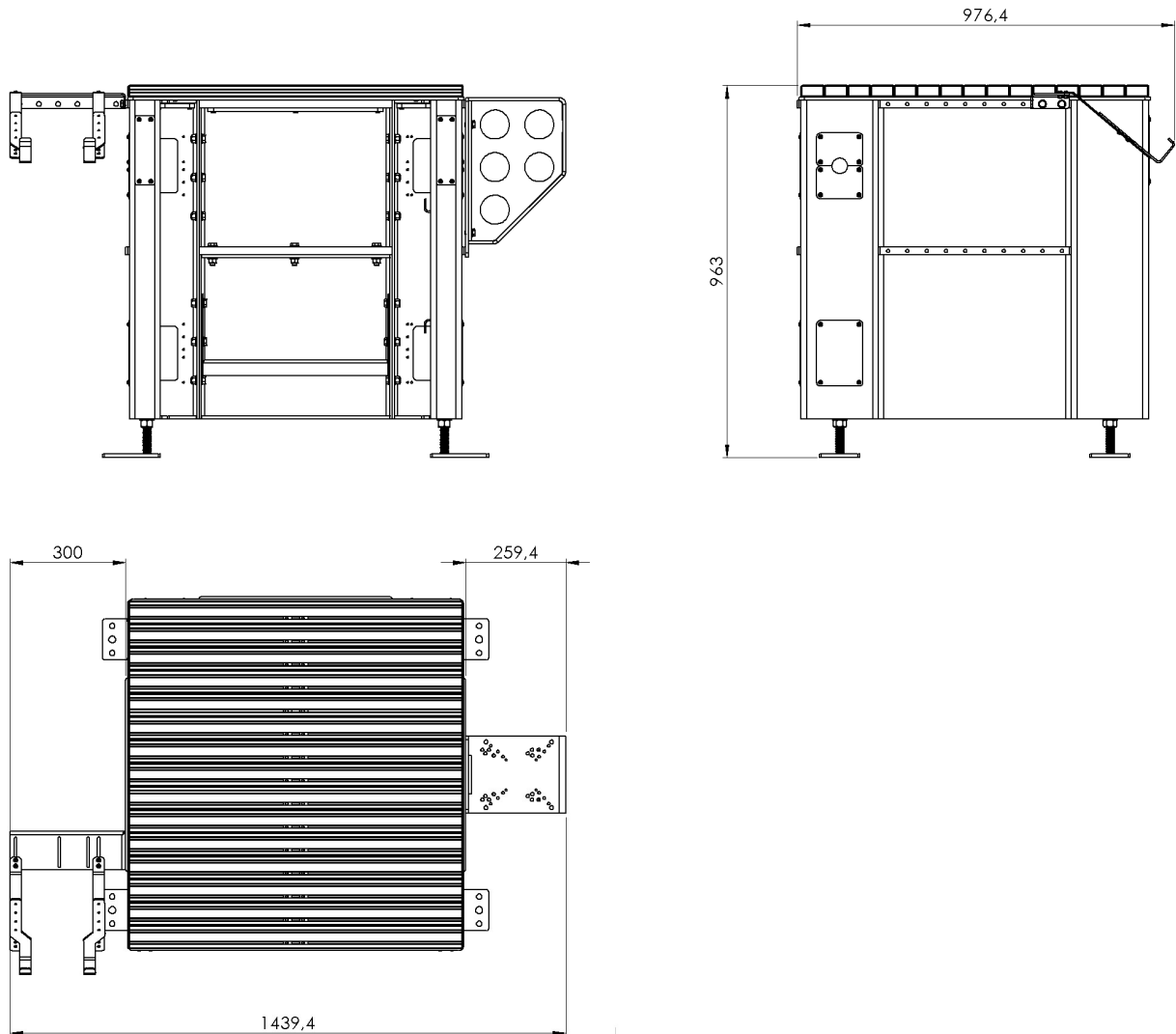
Lash securely. Weight with box is approximately 250 kg.

6 Dimensions

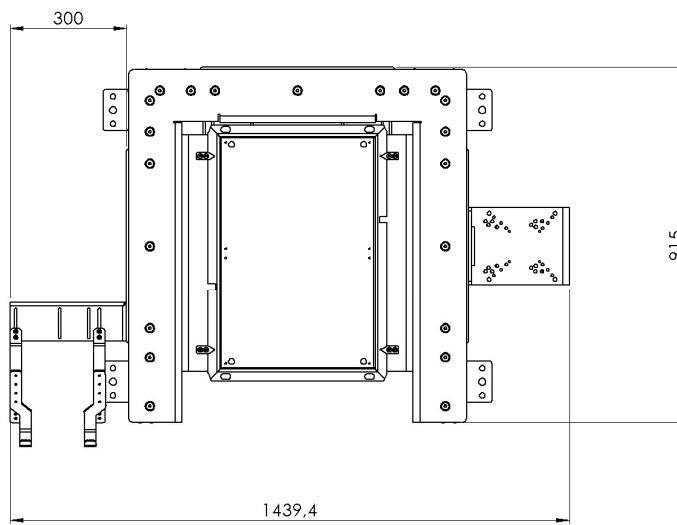
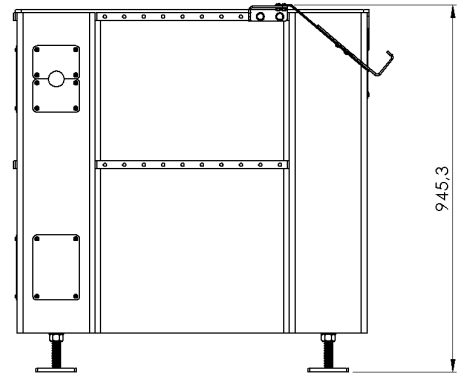
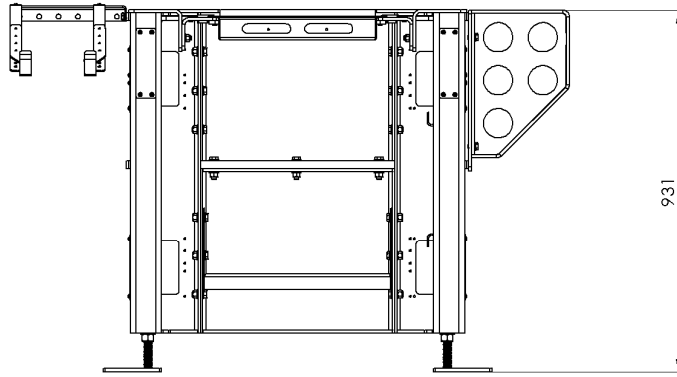
6.1 ProFeeder



6.2 ProFeeder Table

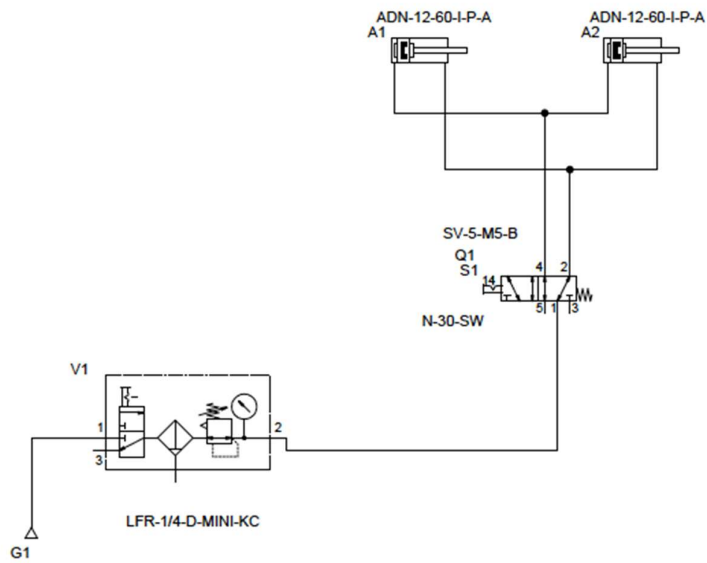


6.3 ProFeeder Light



7 Pneumatic diagram

Pos. No.	Identification	Part number	Order code 1	Type	Item name
1	G1				
2	V1	185733	LFR-1/4-D-MINI-KC	LFR-1/4-D-MINI-KC	Service unit combination
3	A1		ADN-12-60-I-P-A		
4	A2		ADN-12-60-I-P-A		
5	Q1	11914	SV-5-M5-B	SV-5-M5-B	Front panel valve
6	S1	9302	N-30-SW	N-30-SW	Selector switch



8 Version of the ProFeeder

	<p>ProFeeder</p>
	<p>ProFeeder Table</p>
	<p>ProFeeder Light</p>

9 Declaration of incorporation of partly completed machinery (CE)

According to the EU Machinery Directive 2006/42/EC, Annex II 1. B for partly completed machinery

Manufacturer:

EasyRobotics ApS
Mommarmvej 5
DK - 6400 Sønderborg

Person established in the Community authorized to compile the relevant technical documentation:

Per Lachenmeier
EasyRobotics ApS
Mommarmvej 5
DK - 6400 Sønderborg

Description and identification of the partly completed machinery

Product / Article	ProFeeder
Type	PF1002
Project number	0074
Commercial name	ProFeeder
Function	The ProFeeder (when a robot is installed) is to be used for automated feeding for CNC machines and other machines/workplaces. The ProFeeder provides a framework for the robot and a docking station for the Mover which contains both the raw and processed material.

It is declared that the following essential requirements of the Machinery Directive 2006/42/EC have been fulfilled:

1.2.4.3, 1.3.1, 1.3.2, 1.3.7, 1.5.3, 1.6.3, 1.7.3, 1.7.4

It is also declared that the relevant technical documentation has been compiled in accordance with part B of Annex VII.

Reference to the harmonized standards used, as referred to in Article 7 (2):

EN ISO 12100:2010-11	Safety of machinery - General principles for design - Risk assessment and risk reduction (ISO 12100:2010)
EN ISO 4414:2010	Pneumatic fluid power — General rules and safety requirements for systems and their components
DS/EN ISO 14118:2018	Safety of machinery - Prevention of unexpected start-up

The manufacturer or his authorized representative undertake to transmit, in response to a reasoned request by the national authorities, relevant information on the partly completed machinery. This transmission takes place

This does not affect the intellectual property rights!

Important note! The partly completed machinery must not be put into service until the final machinery into which it is to be incorporated has been declared in conformity with the provisions of this Directive, where appropriate.

Sønderborg, 14/10/2020
Place, Date

Signature
Per Lachenmeier, CEO